

Rev. 0 Data 31/03/2015 Nota:



PTMatic S.r.l.  
Via Giotto, 1  
20010 Bareggio (MI)  
www.ptmatic.it

CODIFICA DISEGNO:  
**99396.R0-Arch.-SAM serie**

OGGETTO:  
**Plan and views - SAMHN  
swinging door**

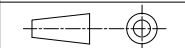
Materiale:

Note:

Tavola

Scala

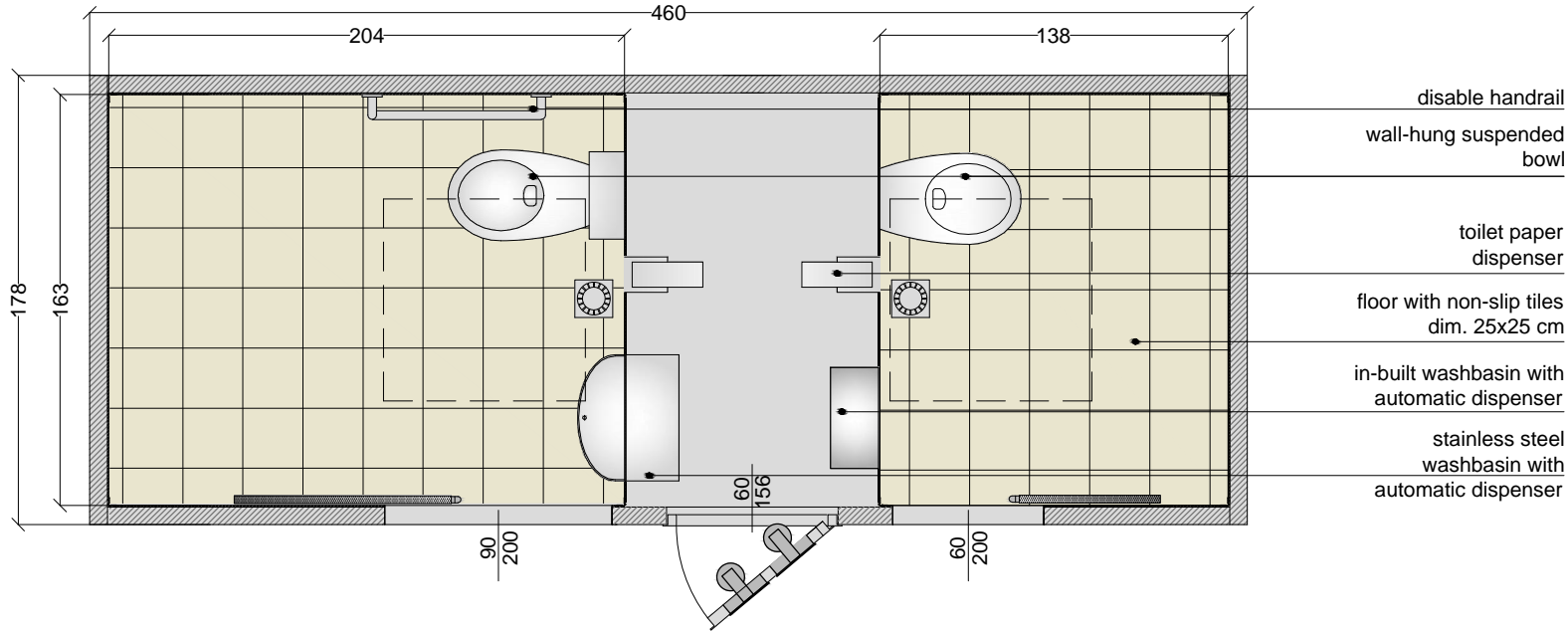
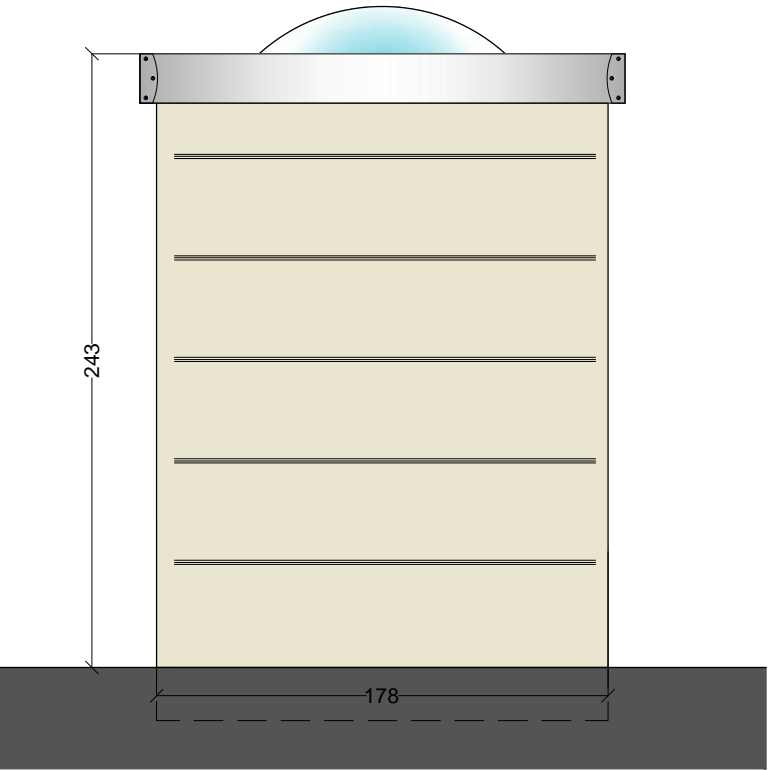
1:30



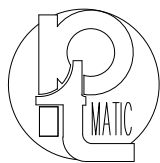
Dis. da

L. Preti

Appr. da



Rev. 0 Data 31/03/2015 Nota:



PTMatic S.r.l.  
Via Giotto, 1  
20010 Bareggio (MI)  
www.ptmatic.it

CODIFICA DISEGNO:  
**99396.R0-Arch.-SAM serie**

OGGETTO:  
**Plan and views - SAMHN  
sliding door**

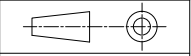
Materiale:

Note:

Tavola

Scala

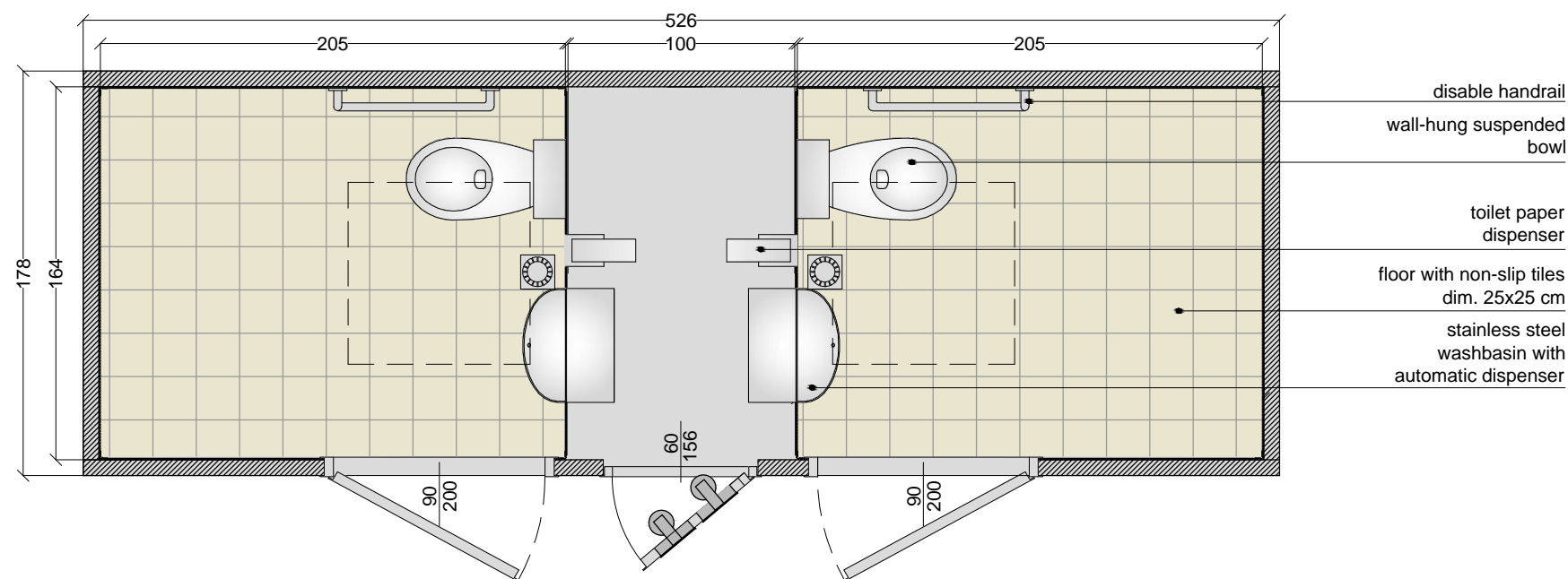
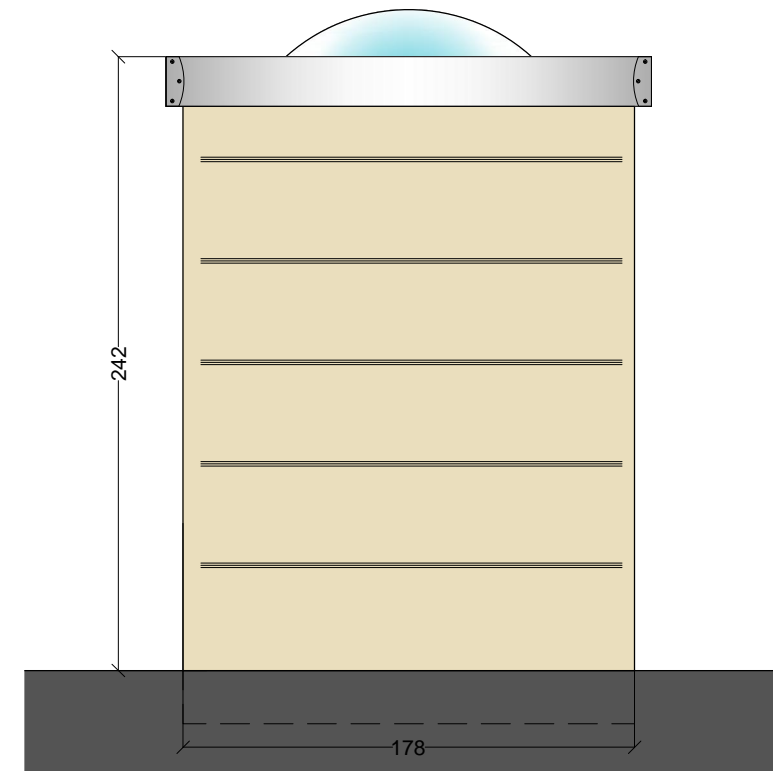
1:30





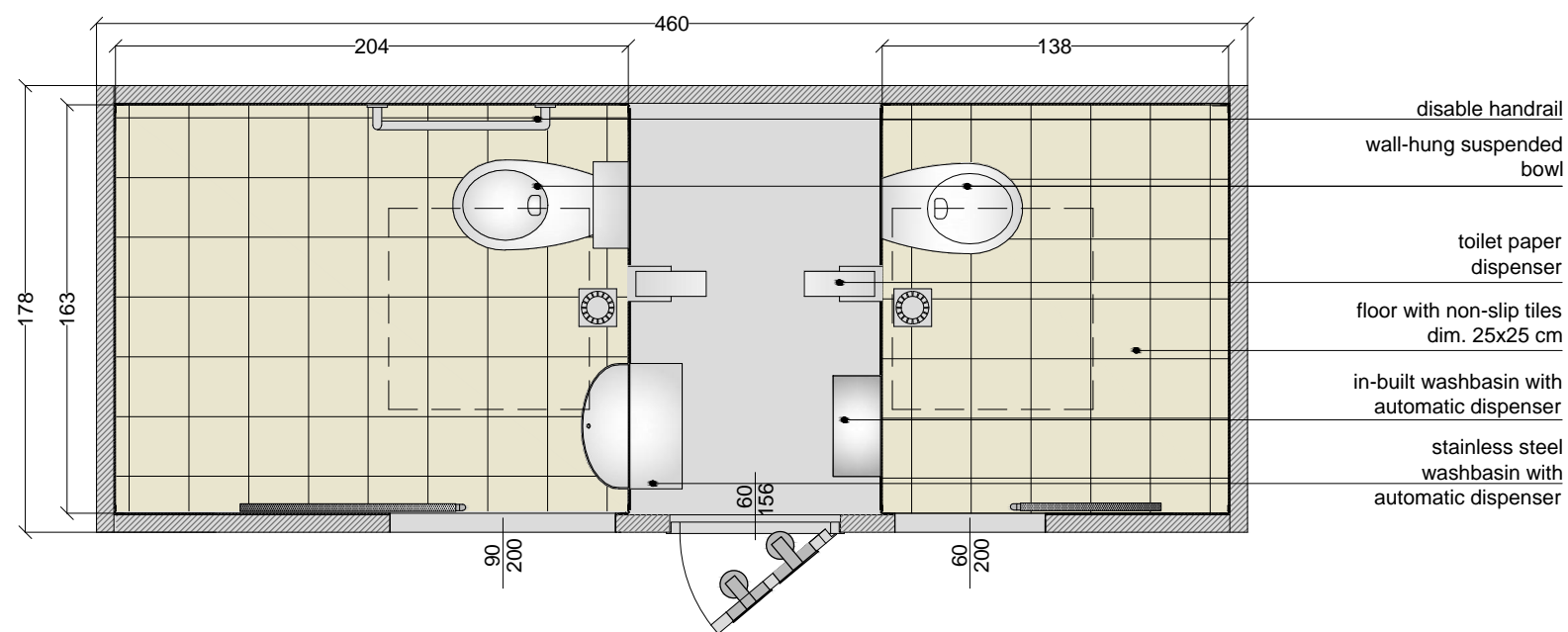
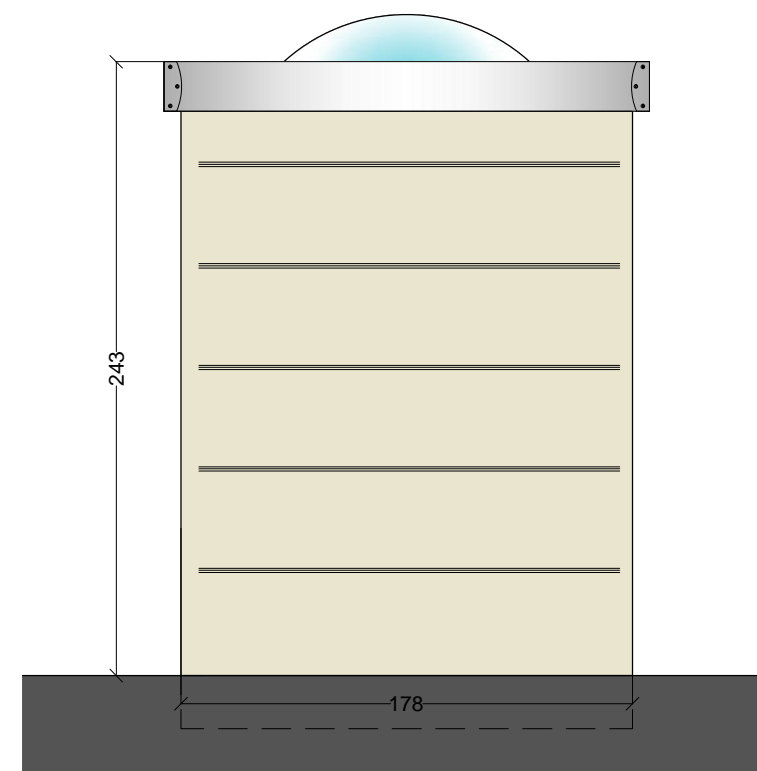
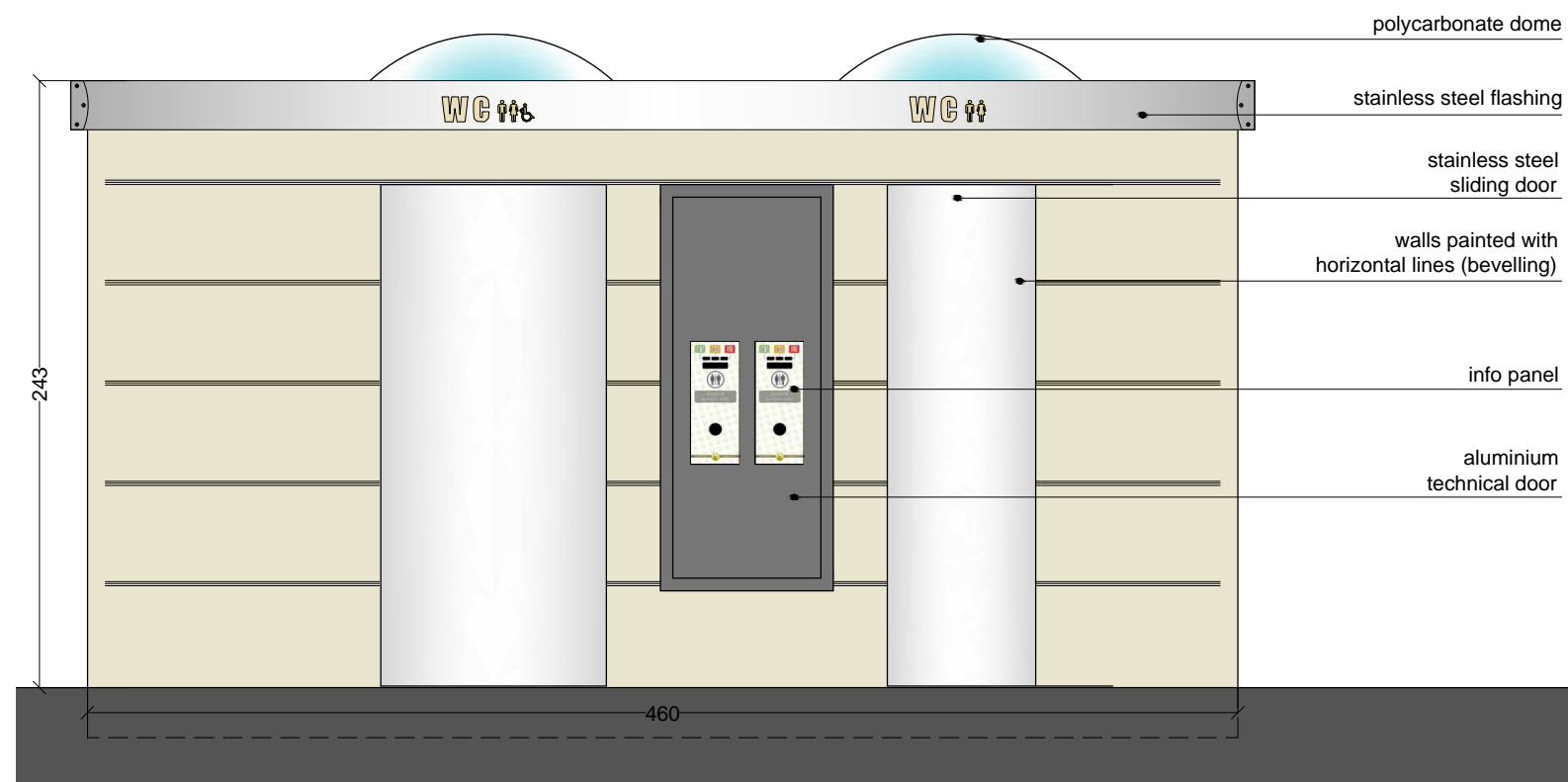
Dis. da

L. Preti

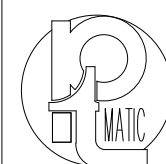
Appr. da



Rev. 0		Data 31/03/2015	Nota:
 PTMatic S.r.l. Via Giotto, 1 20010 Bareggio (MI) www.ptmatic.it	CODIFICA DISEGNO: <b>99396.R0-Arch.-SAM serie</b>		Tavola
	OGGETTO: <b>Plan and views SAM2H swinging door</b>		Scala
	Materiale:		1:30 
	Note:		Dis. da
			L. Preti
			Appr. da



Rev. 0 Data 31/03/2015 Nota:



PTMatic S.r.l.  
Via Giotto, 1  
20010 Bareggio (MI)  
www.ptmatic.it

CODIFICA DISEGNO:  
**99396.R0-Arch.-SAM serie**

OGGETTO:  
**Plan and views SAM2H  
sliding door**

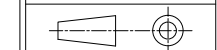
Materiale:

Note:

Tavola

Scala

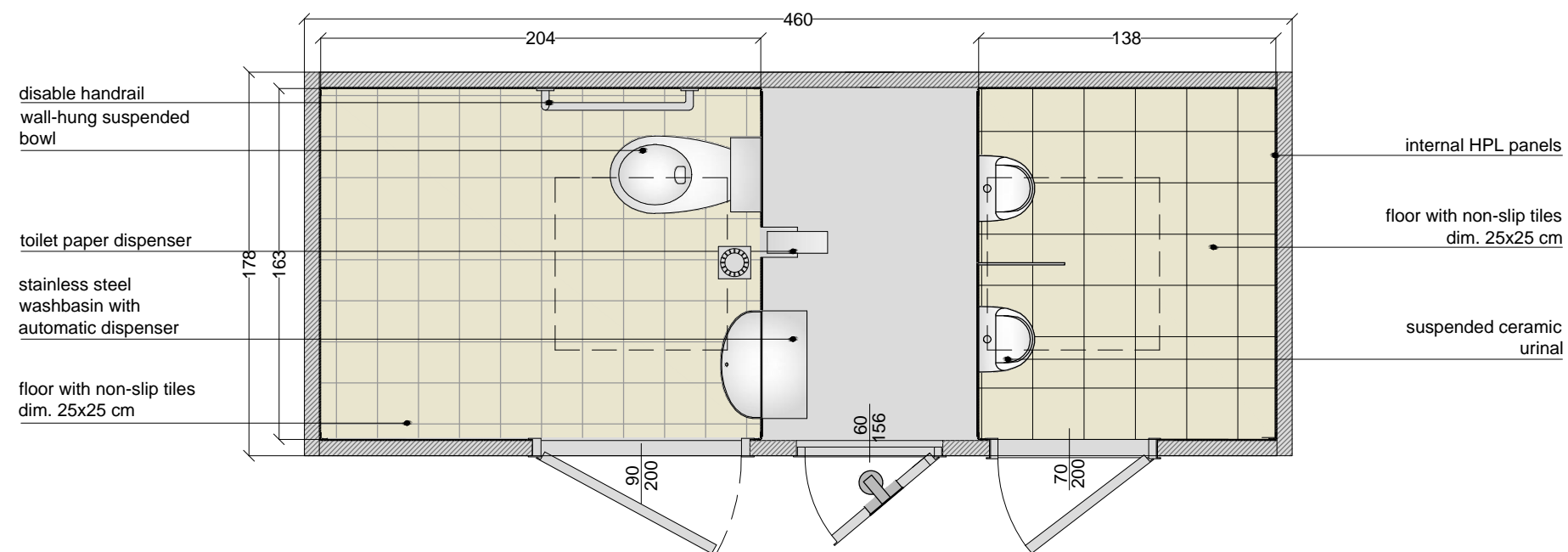
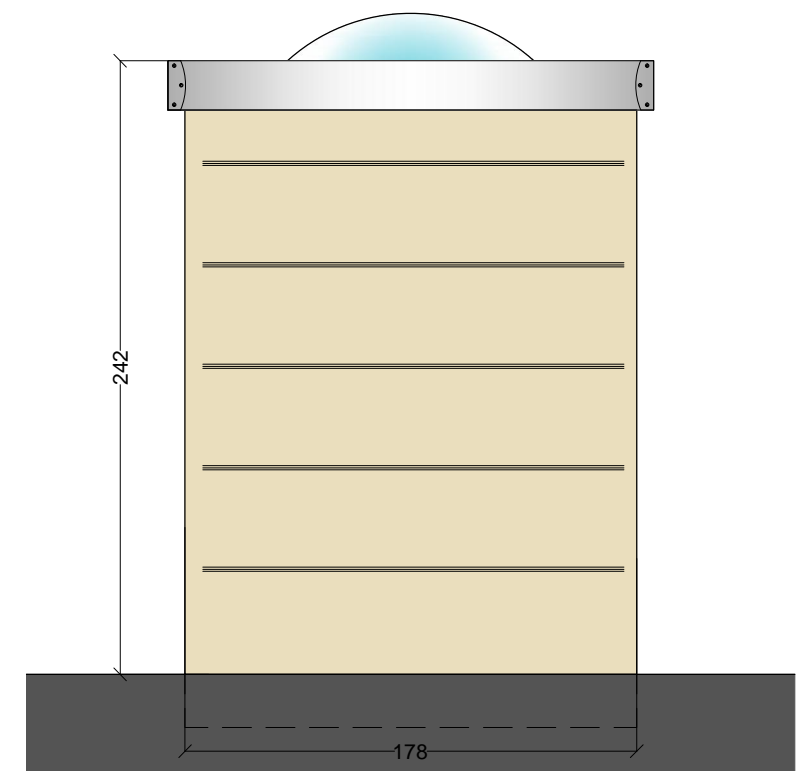
1:30




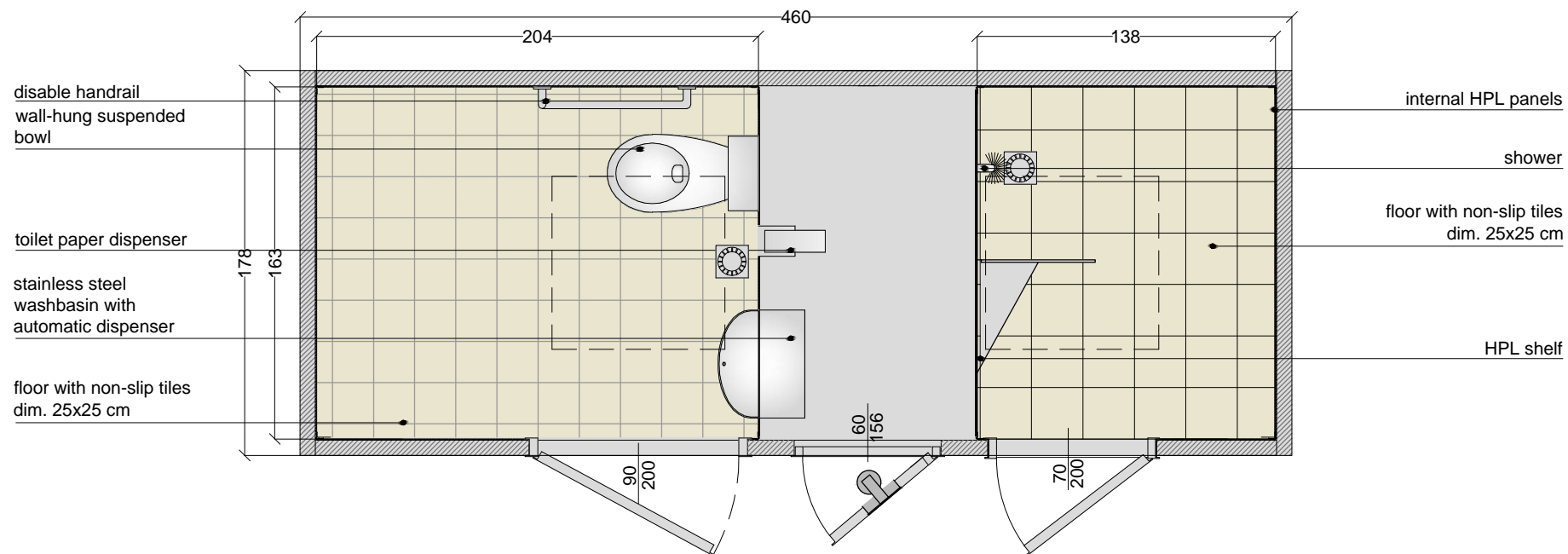
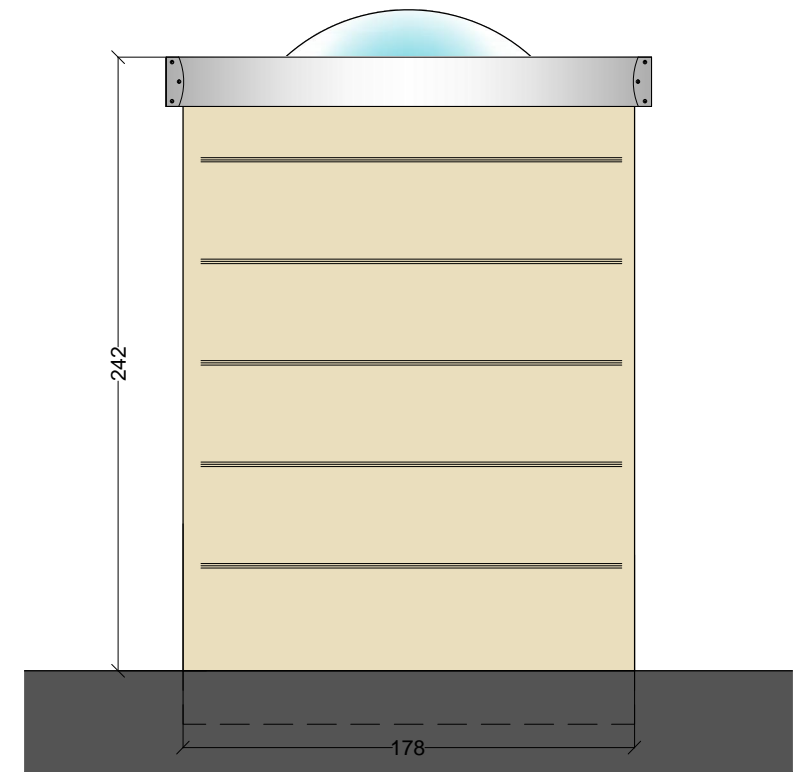
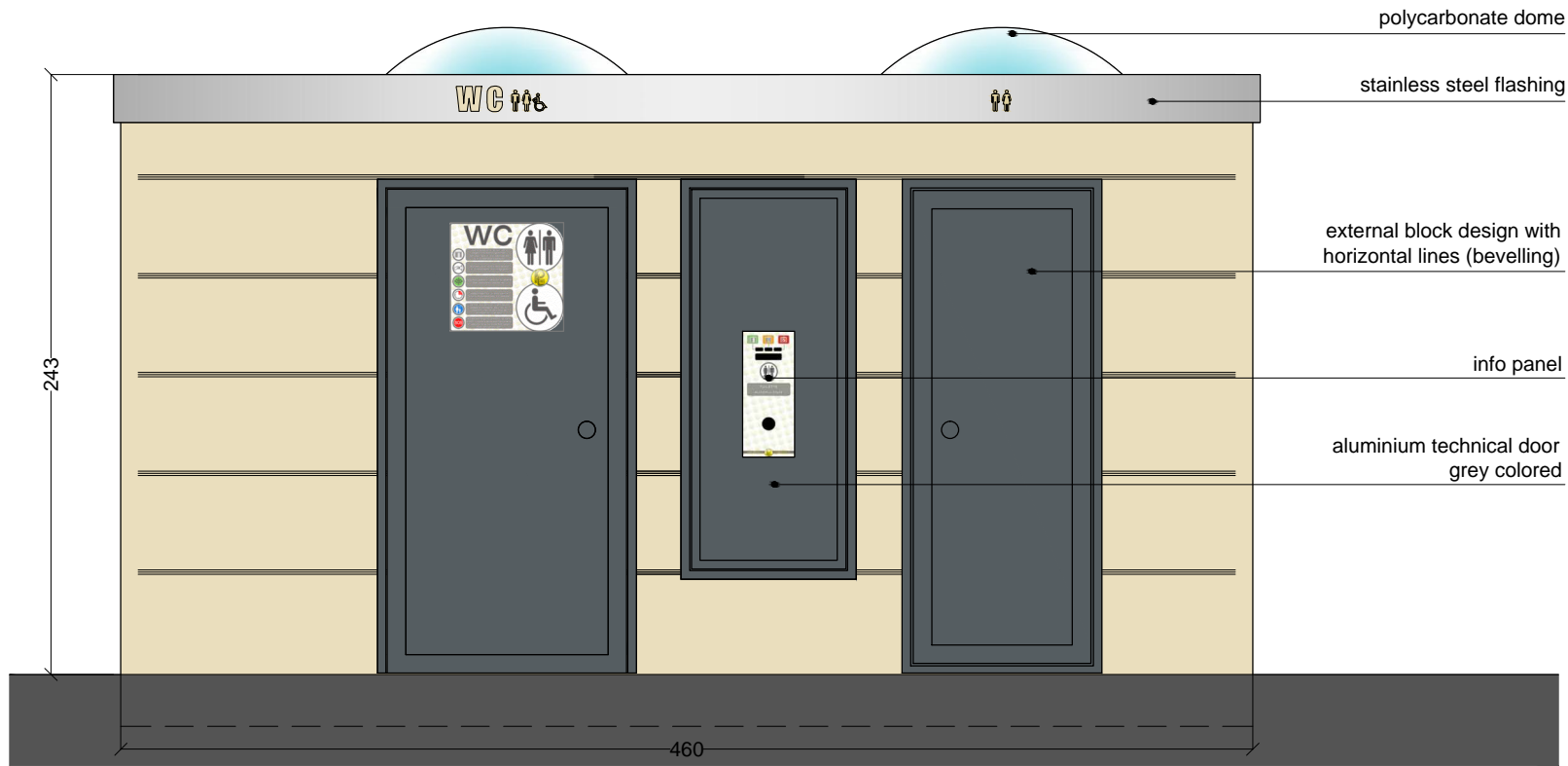
Dis. da


L. Preti

Appr. da



<b>Rev. 0</b>   <b>Data 31/03/2015</b>   <b>Nota:</b>				
 PTMatic S.r.l. Via Giotto, 1 20010 Bareggio (MI) www.ptmatic.it	CODIFICA DISEGNO: <b>99396.R0-Arch.-SAM serie</b>		Tavola	
	OGGETTO: <b>Plan and Views-SAMHU swinging door</b>		Scala <b>1:30</b>	
	Materiale:		Dis. da <b>L. Preti</b>	
	Note:		Appr. da	



Rev. 0			Data 31/03/2015		Nota:	
  PTMatic S.r.l. Via Giotto, 1 20010 Bareggio (MI) www.ptmatic.it	CODIFICA DISEGNO: <b>99396.R0-Arch.-SAM serie</b>				Tavola	
	OGGETTO: <b>Plan and Views-SAMHD swinging door</b>				Scala  1:30	
	Materiale:				Dis. da  L. Preti	
	Note:				Appr. da	